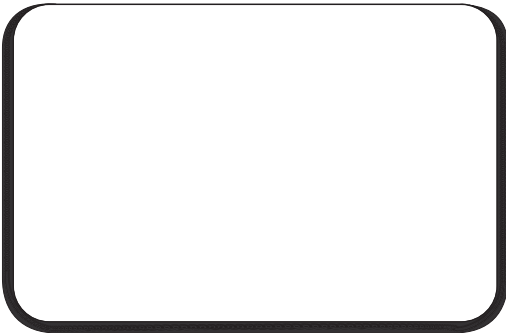
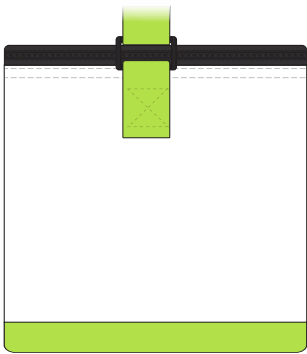




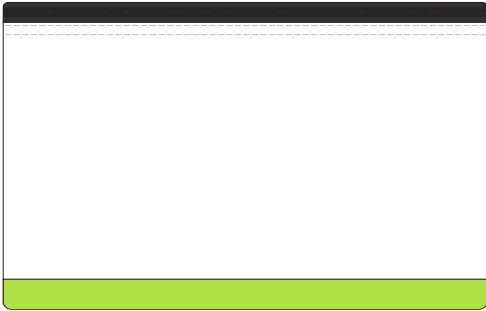
20% of Actual Size  
Sublimation



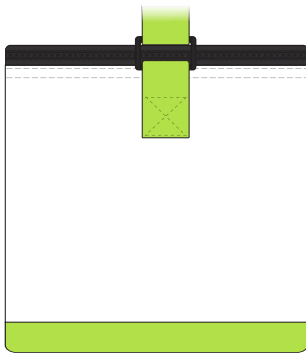
LID (TOP) PANEL



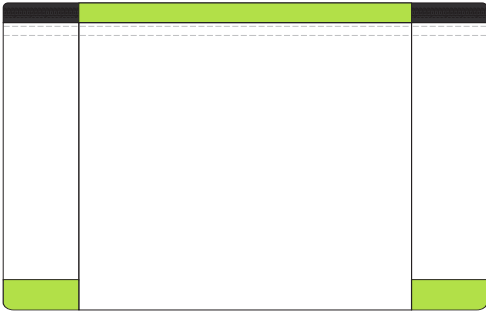
LEFT GUSSET



FRONT PANEL



RIGHT GUSSET

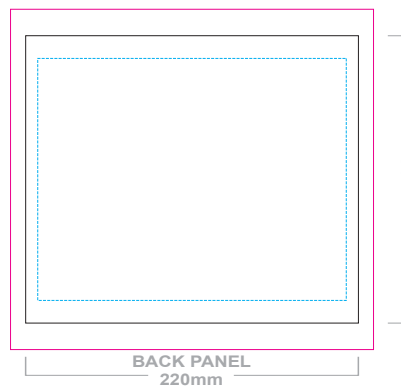
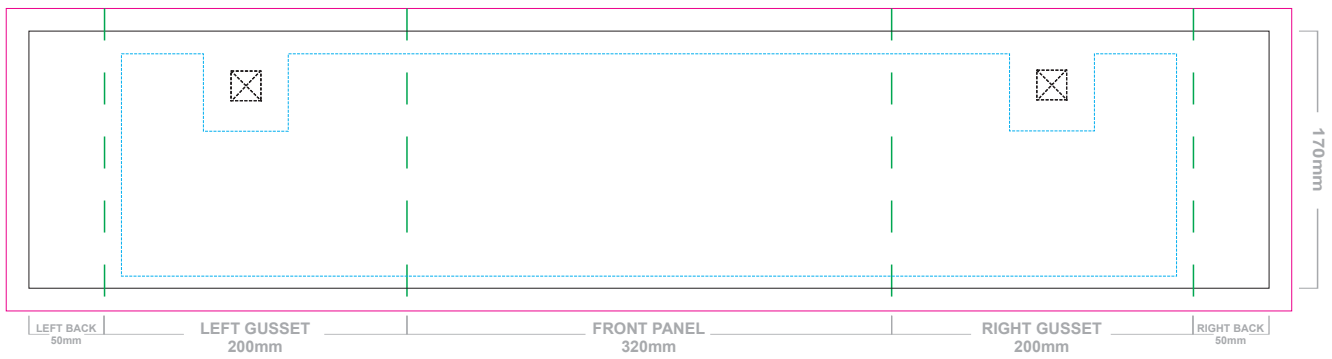
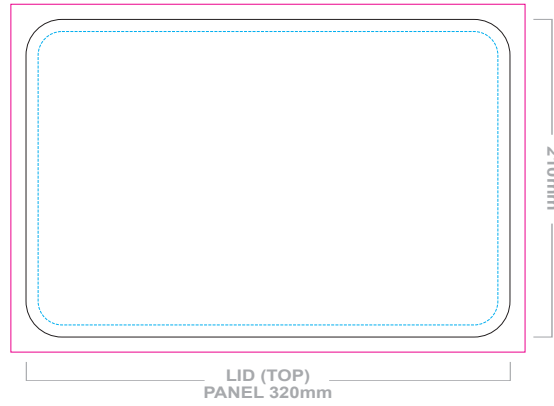


RIGHT  
BACK

BACK PANEL

LEFT  
BACK

20% of Actual Size  
Sublimation Template



Blue Line = The SIGNIFICANT PRINT AREA  
(Keep all critical images & text within this box)  
Black Line = Maximum print area  
Pink Line = Bleed off to here  
Green Line = Fold Line