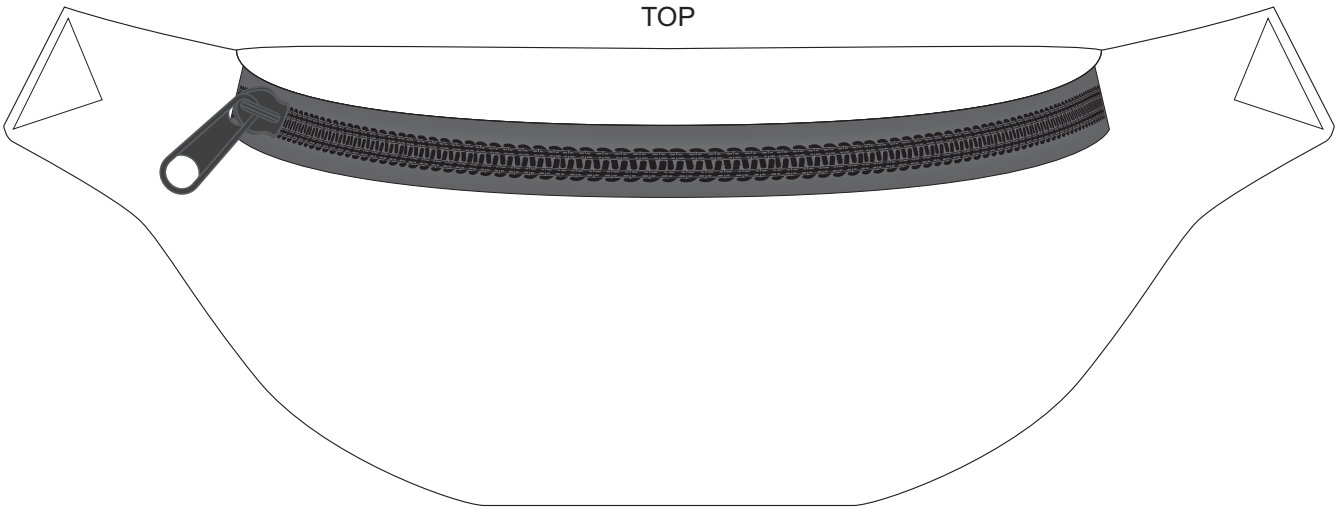


40% of Actual Size
Sublimation Print

TOP

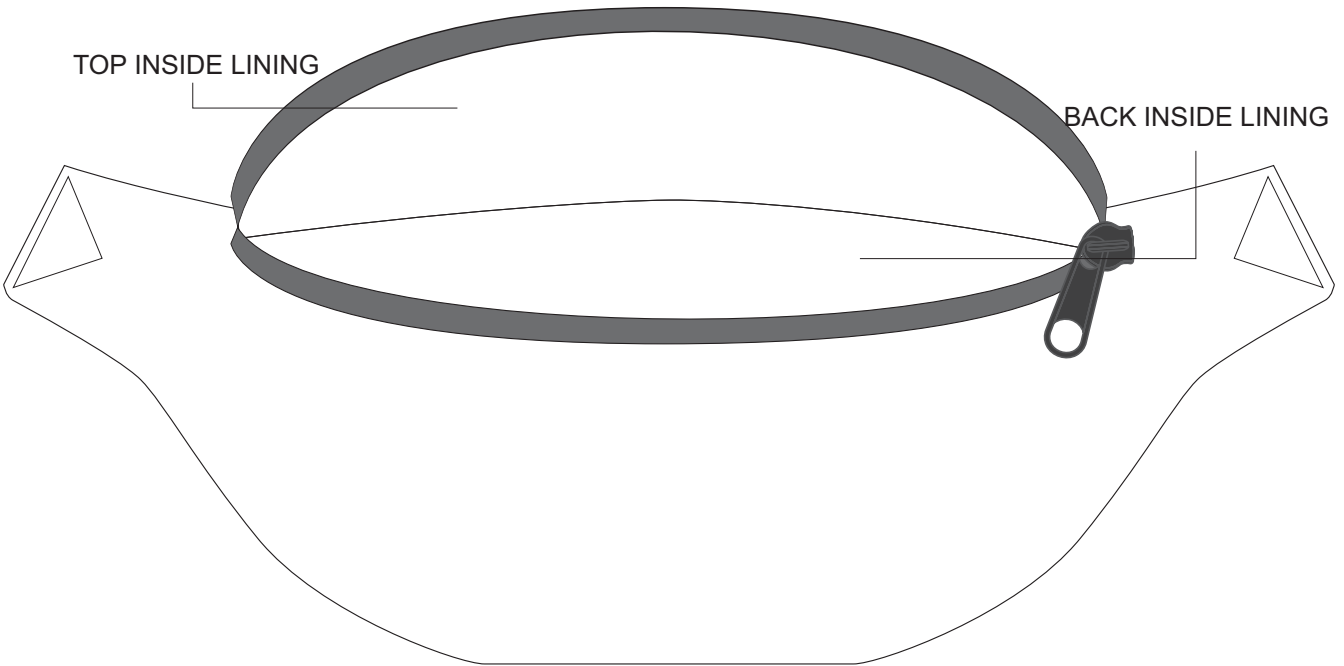


FRONT

40% of Actual Size
Sublimation Print

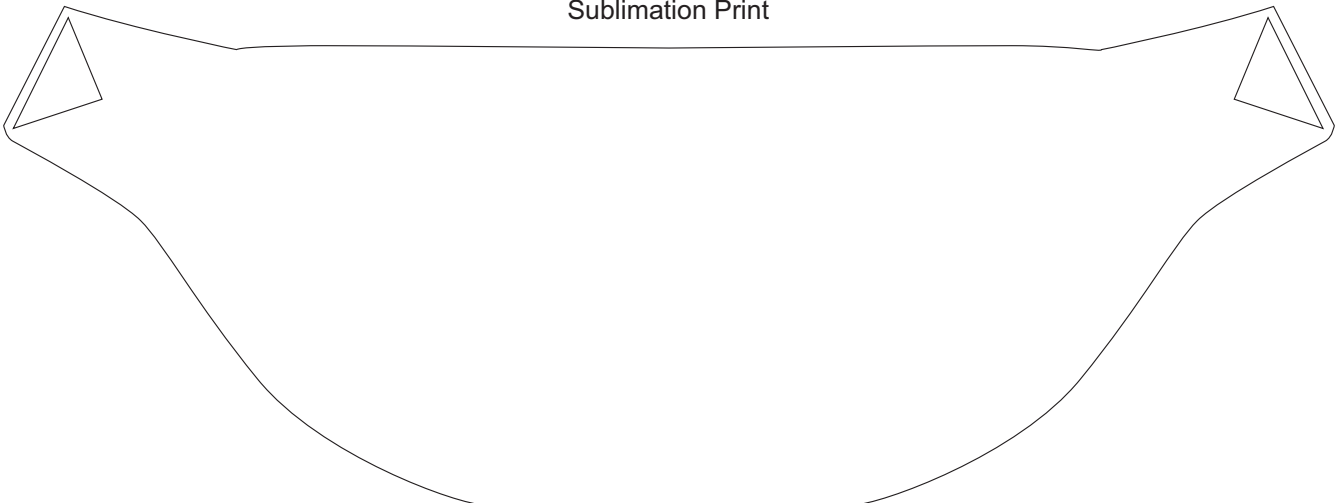
TOP INSIDE LINING

BACK INSIDE LINING



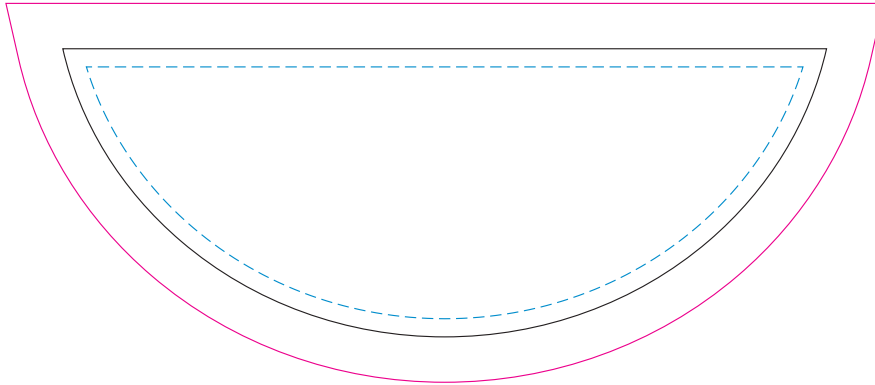
FRONT

40% of Actual Size
Sublimation Print



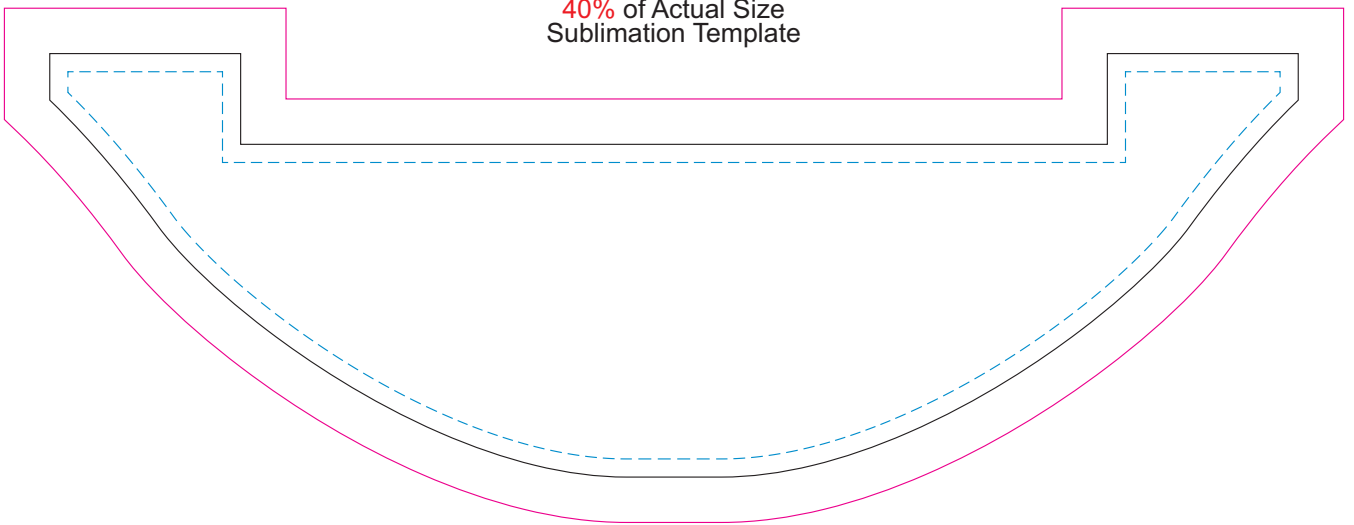
BACK

40% of Actual Size
Sublimation Template



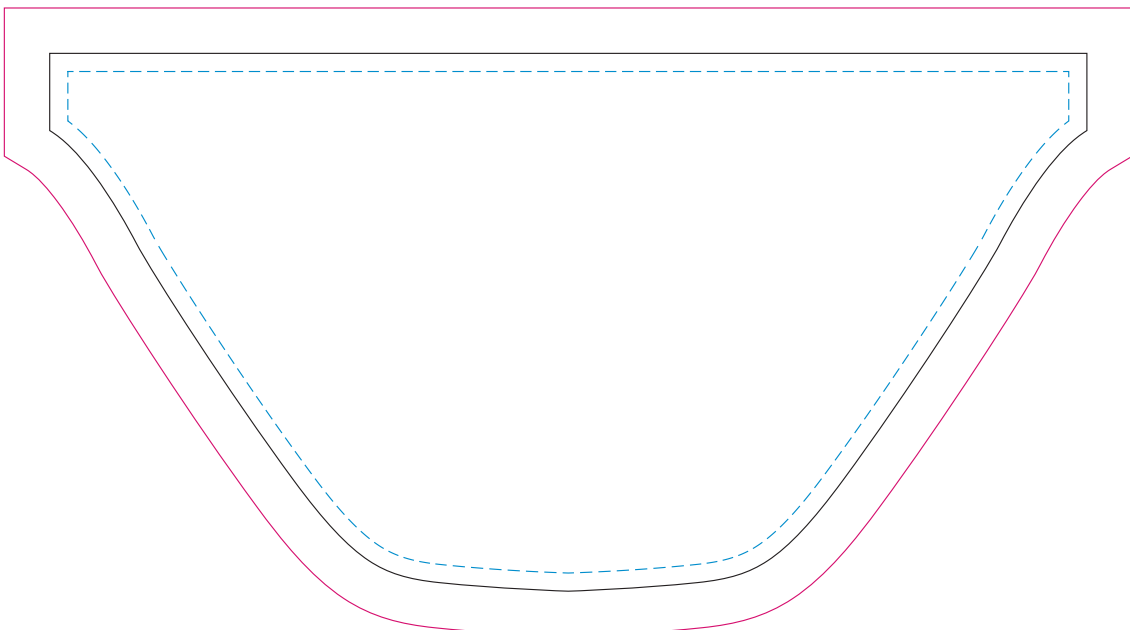
TOP

40% of Actual Size
Sublimation Template



FRONT

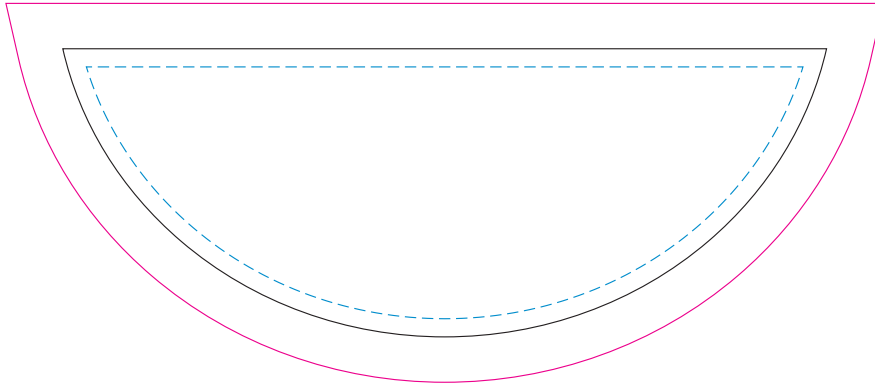
40% of Actual Size
Sublimation Template



BACK

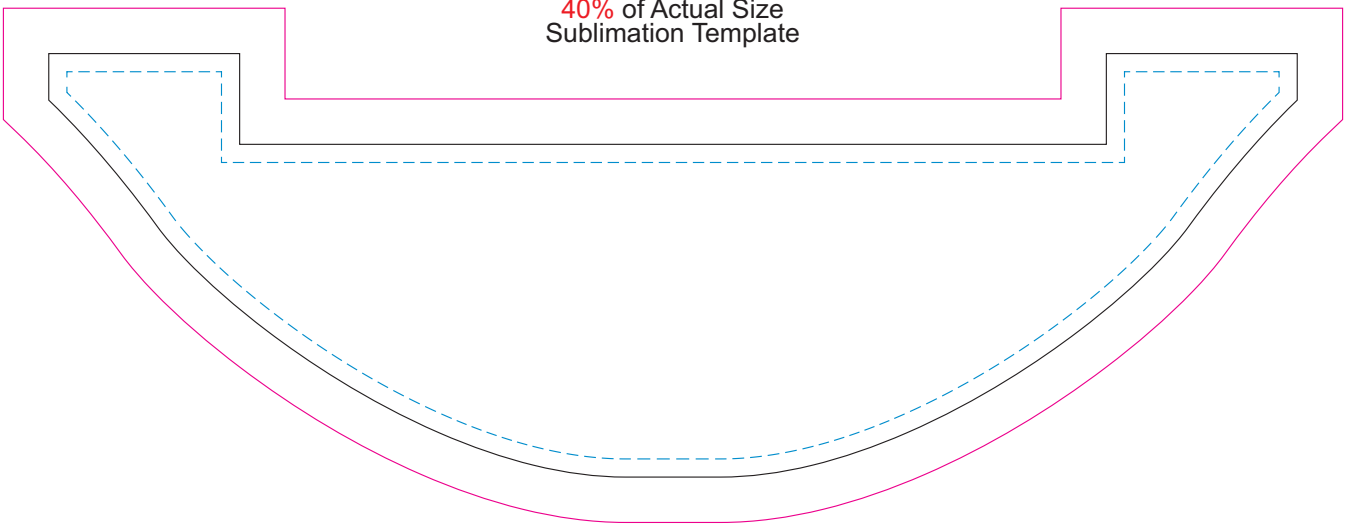
Blue Line = The SIGNIFICANT PRINT AREA
(Keep all critical images & text within this box)
Black Line = Maximum print area
Pink Line = Bleed off to here

40% of Actual Size
Sublimation Template



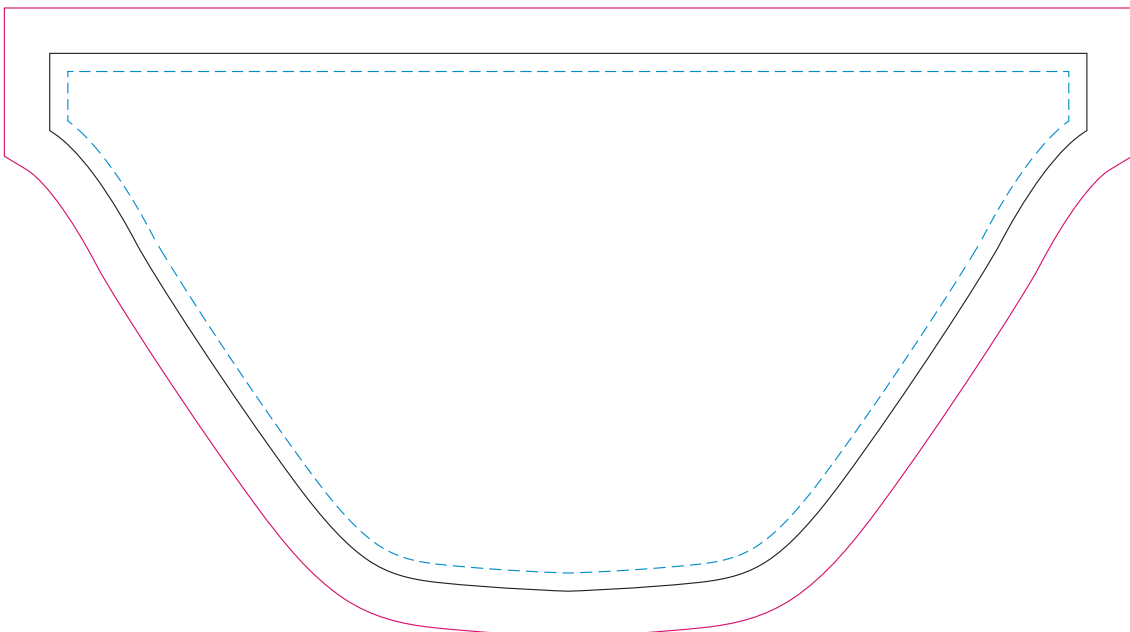
TOP-INSIDE

40% of Actual Size
Sublimation Template



FRONT-INSIDE

40% of Actual Size
Sublimation Template



BACK-INSIDE

Blue Line = The SIGNIFICANT PRINT AREA
(Keep all critical images & text within this box)
Black Line = Maximum print area
Pink Line = Bleed off to here