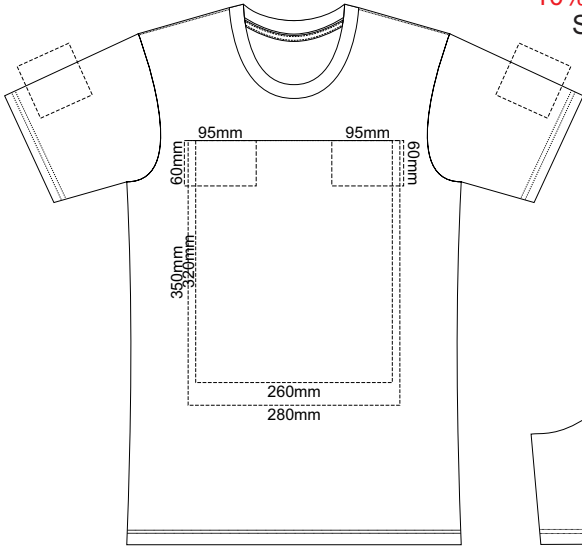
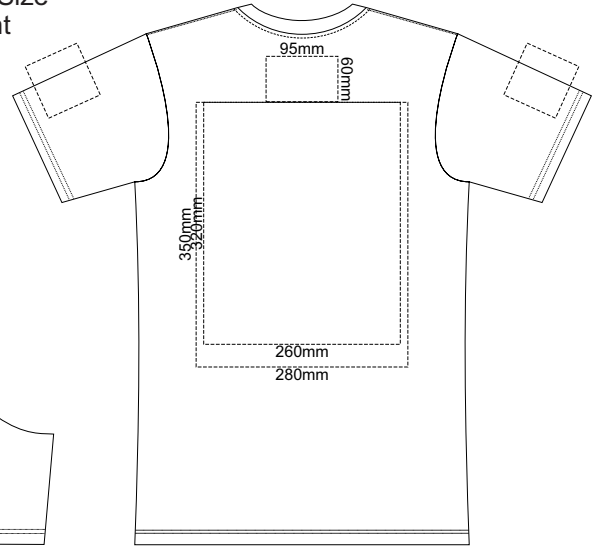


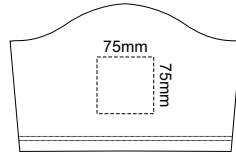
10% of Actual Size  
Screen Print



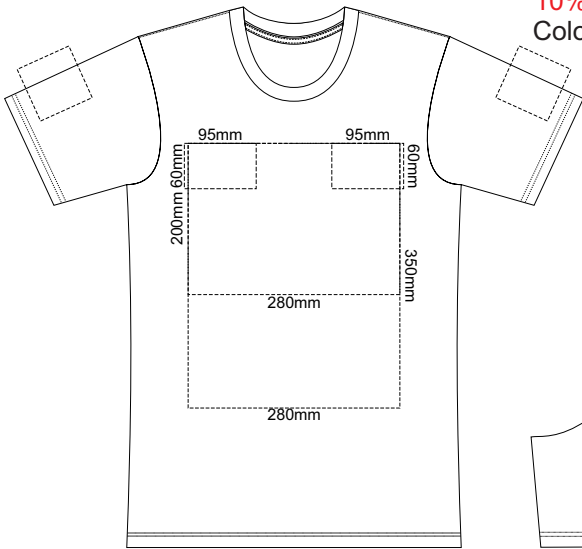
**MENS FRONT XS**



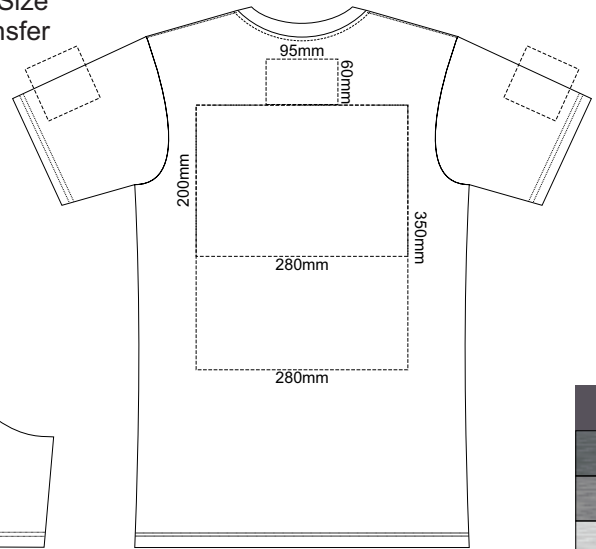
**MENS BACK XS**



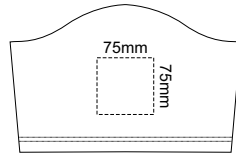
10% of Actual Size  
Colourflex Transfer



**MENS FRONT XS**



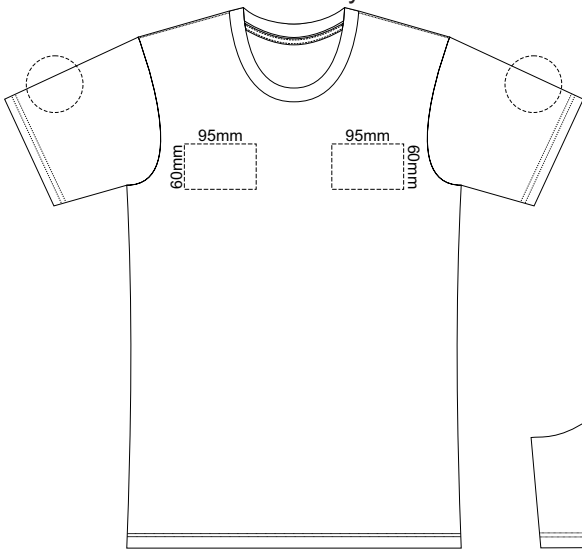
**MENS BACK XS**



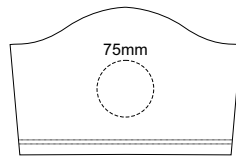
Print area 280x200mm can be rotated to best suit.

Print area 280x200mm can be rotated to best suit.

10% of Actual Size  
Embroidery

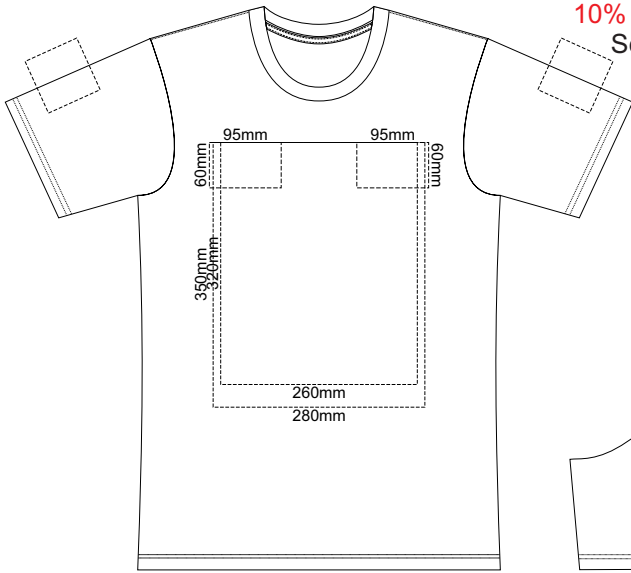


**MENS FRONT XS**

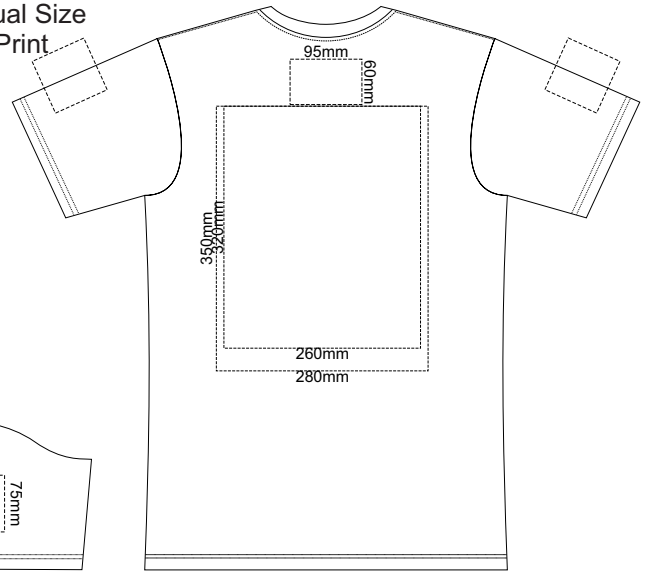


|              |
|--------------|
| Graphite     |
| Charcoal     |
| Grey         |
| Ash          |
| Ecru         |
| Gold         |
| Mustard      |
| Orange       |
| Rust         |
| Fuchsia      |
| Red          |
| Kelly Green  |
| Olive        |
| Bottle Green |
| Cyan         |
| Petrol Blue  |
| Royal Blue   |
| Navy         |
| Purple       |
| Carbon       |
| Black        |
| Jet Black    |

10% of Actual Size  
Screen Print

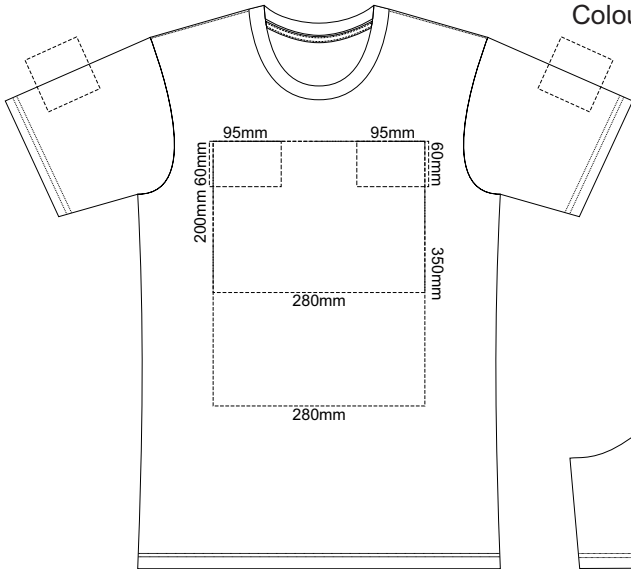


**MENS FRONT SMALL**



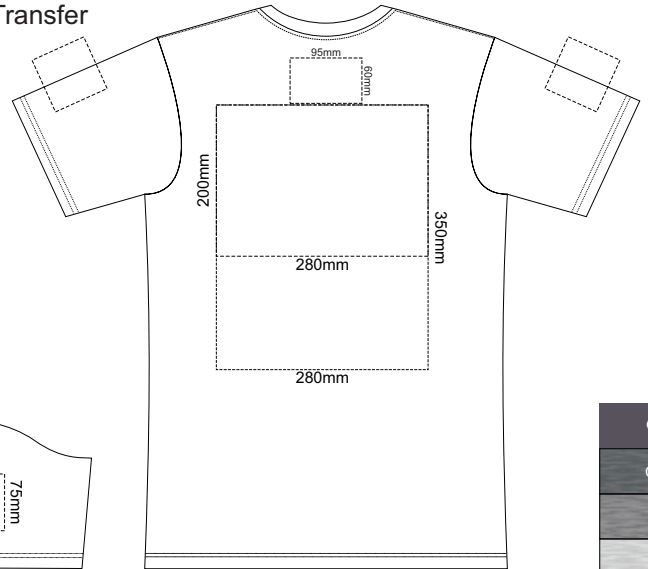
**MENS BACK SMALL**

10% of Actual Size  
Colourflex Transfer



**MENS FRONT SMALL**

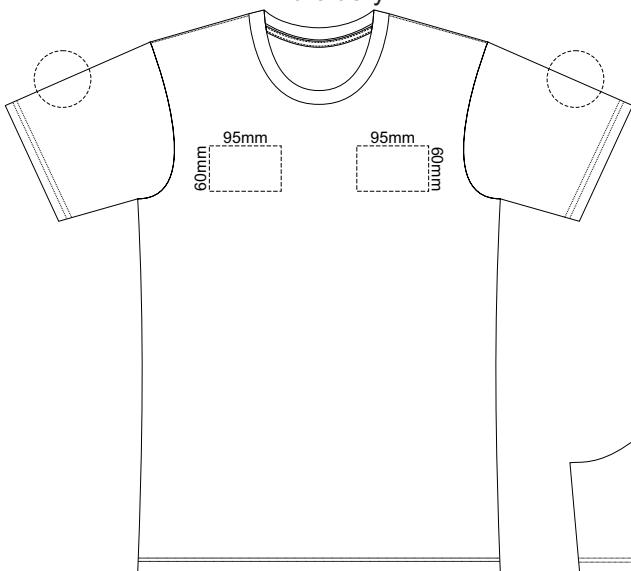
Print area 280x200mm can be rotated to best suit.



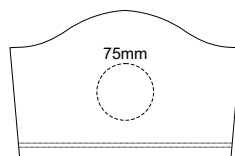
**MENS BACK SMALL**

Print area 280x200mm can be rotated to best suit.

10% of Actual Size  
Embroidery

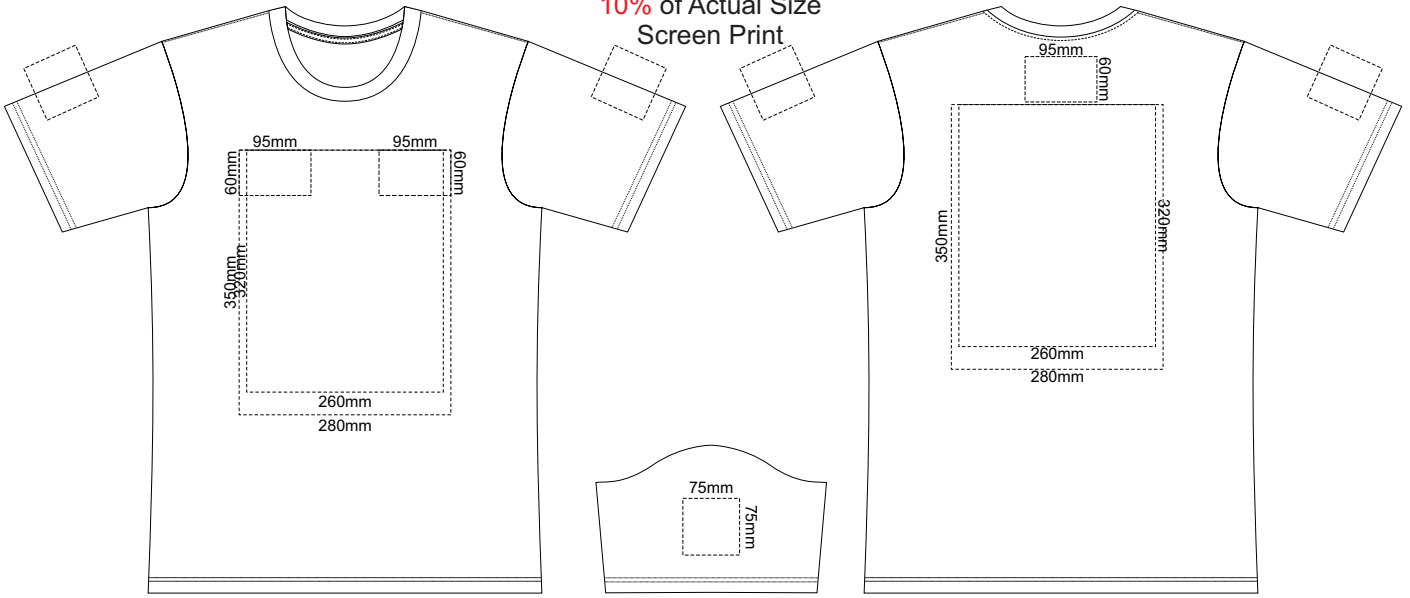


**MENS FRONT SMALL**



|              |
|--------------|
| Graphite     |
| Charcoal     |
| Grey         |
| Ash          |
| Ecru         |
| Gold         |
| Mustard      |
| Orange       |
| Rust         |
| Fuchsia      |
| Red          |
| Kelly Green  |
| Olive        |
| Bottle Green |
| Cyan         |
| Petrol Blue  |
| Royal Blue   |
| Navy         |
| Purple       |
| Carbon       |
| Black        |
| Jet Black    |

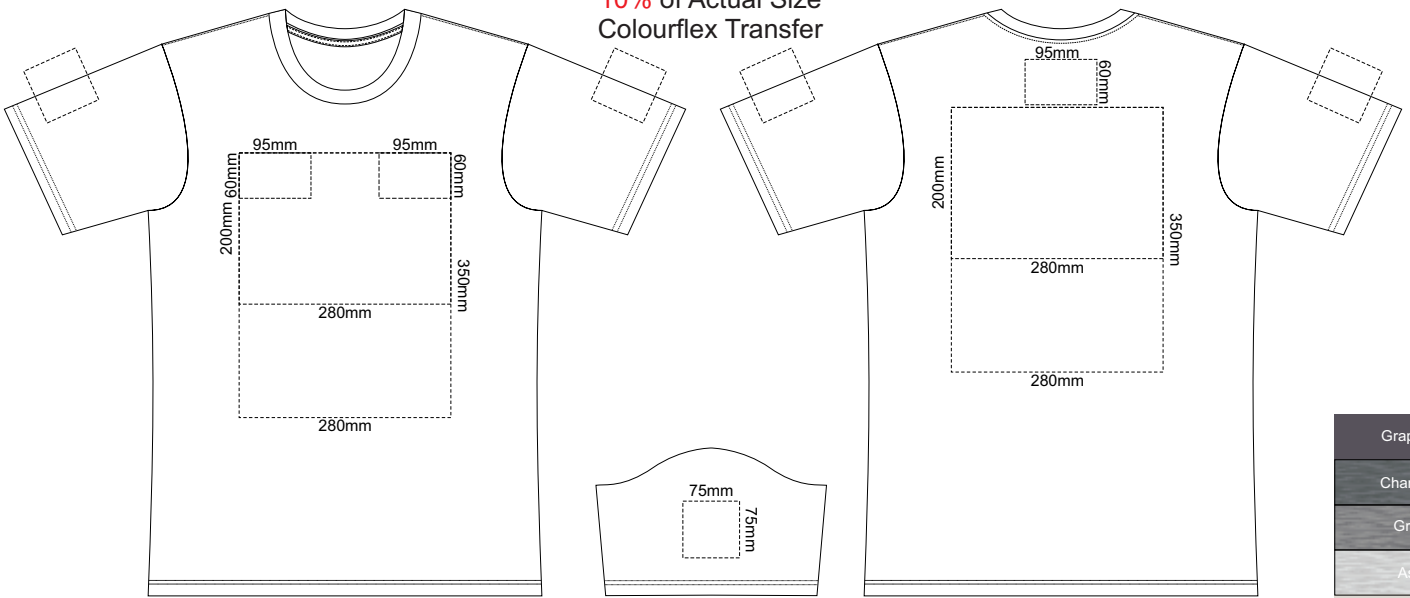
10% of Actual Size  
Screen Print



**MENS FRONT MEDIUM**

**MENS BACK MEDIUM**

10% of Actual Size  
Colourflex Transfer



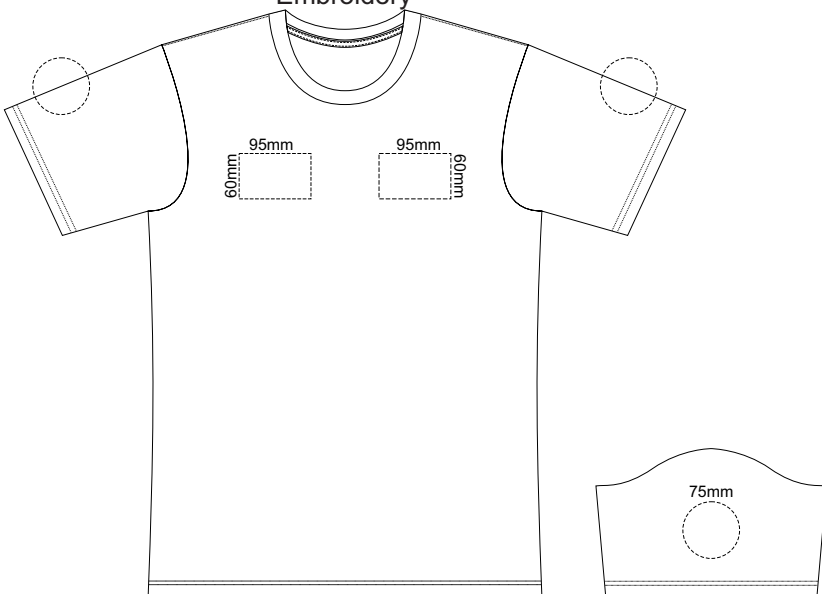
Print area 280x200mm can be rotated to best suit.

**MENS FRONT MEDIUM**

Print area 280x200mm can be rotated to best suit.

**MENS BACK MEDIUM**

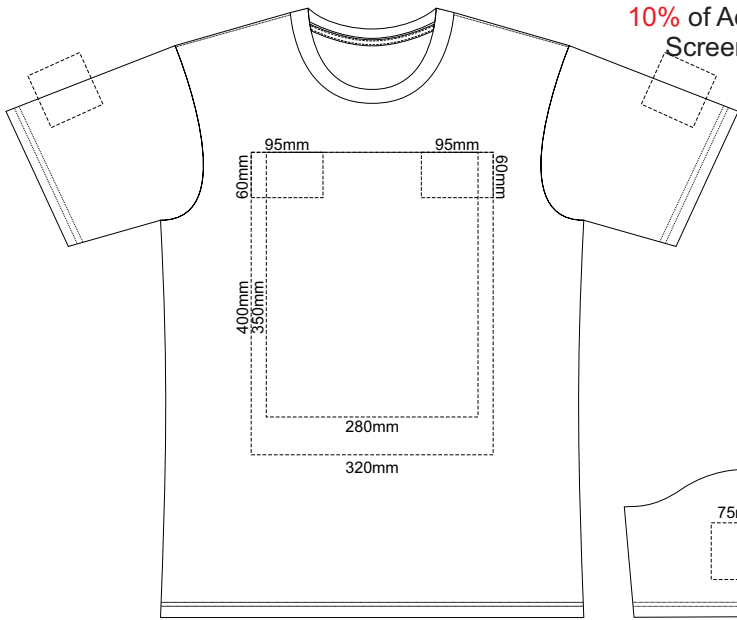
10% of Actual Size  
Embroidery



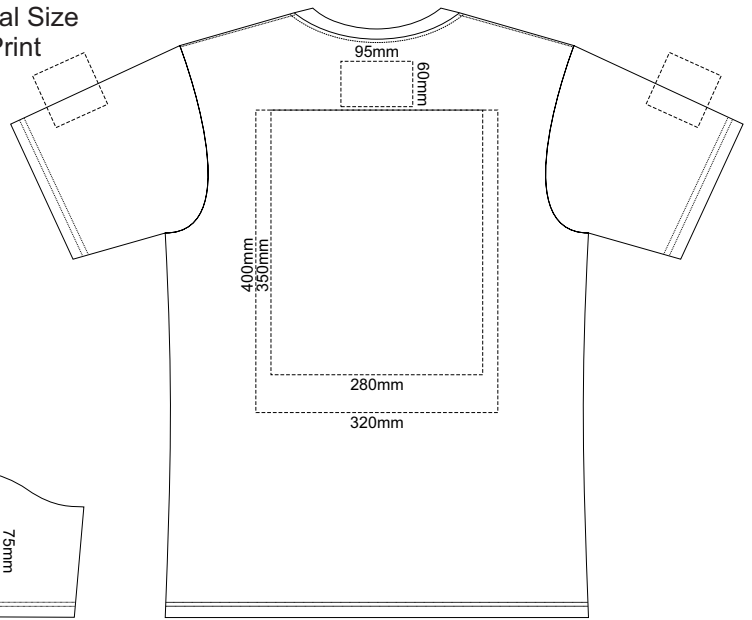
**MENS FRONT MEDIUM**

|              |
|--------------|
| Graphite     |
| Charcoal     |
| Grey         |
| Ash          |
| Ecru         |
| Gold         |
| Mustard      |
| Orange       |
| Rust         |
| Fuchsia      |
| Red          |
| Kelly Green  |
| Olive        |
| Bottle Green |
| Cyan         |
| Petrol Blue  |
| Royal Blue   |
| Navy         |
| Purple       |
| Carbon       |
| Black        |
| Jet Black    |

10% of Actual Size  
Screen Print

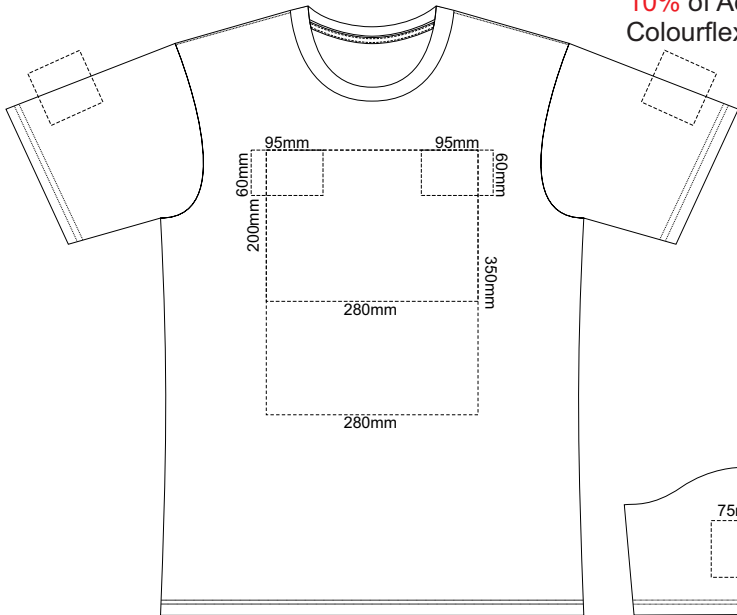


**MENS FRONT LARGE**



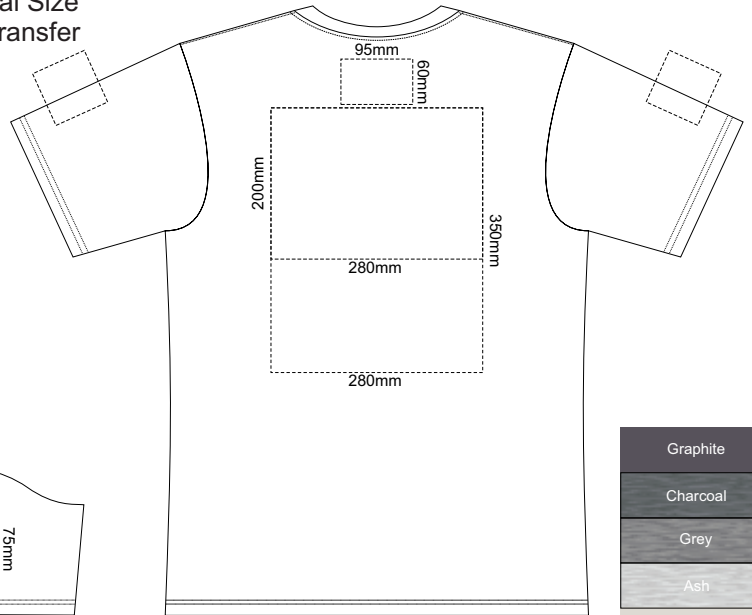
**MENS BACK LARGE**

10% of Actual Size  
Colourflex Transfer



**MENS FRONT LARGE**

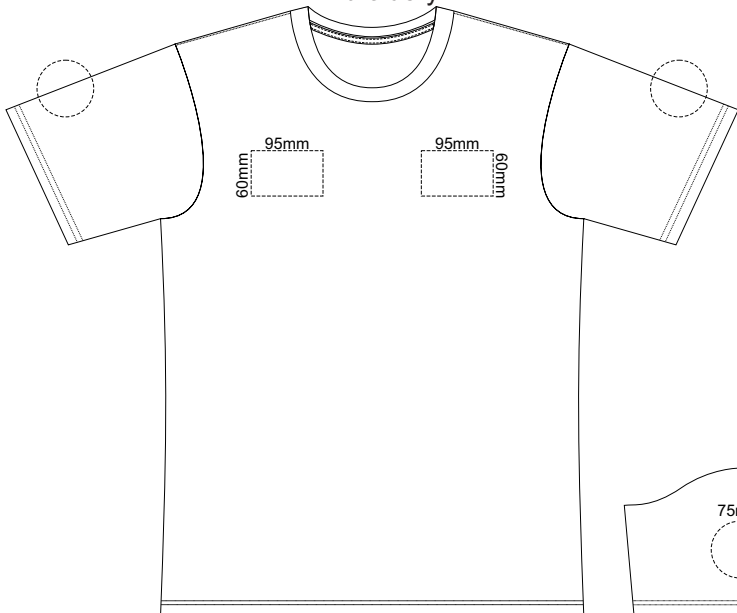
Print area 280x200mm can be rotated to best suit.



**MENS BACK LARGE**

Print area 280x200mm can be rotated to best suit.

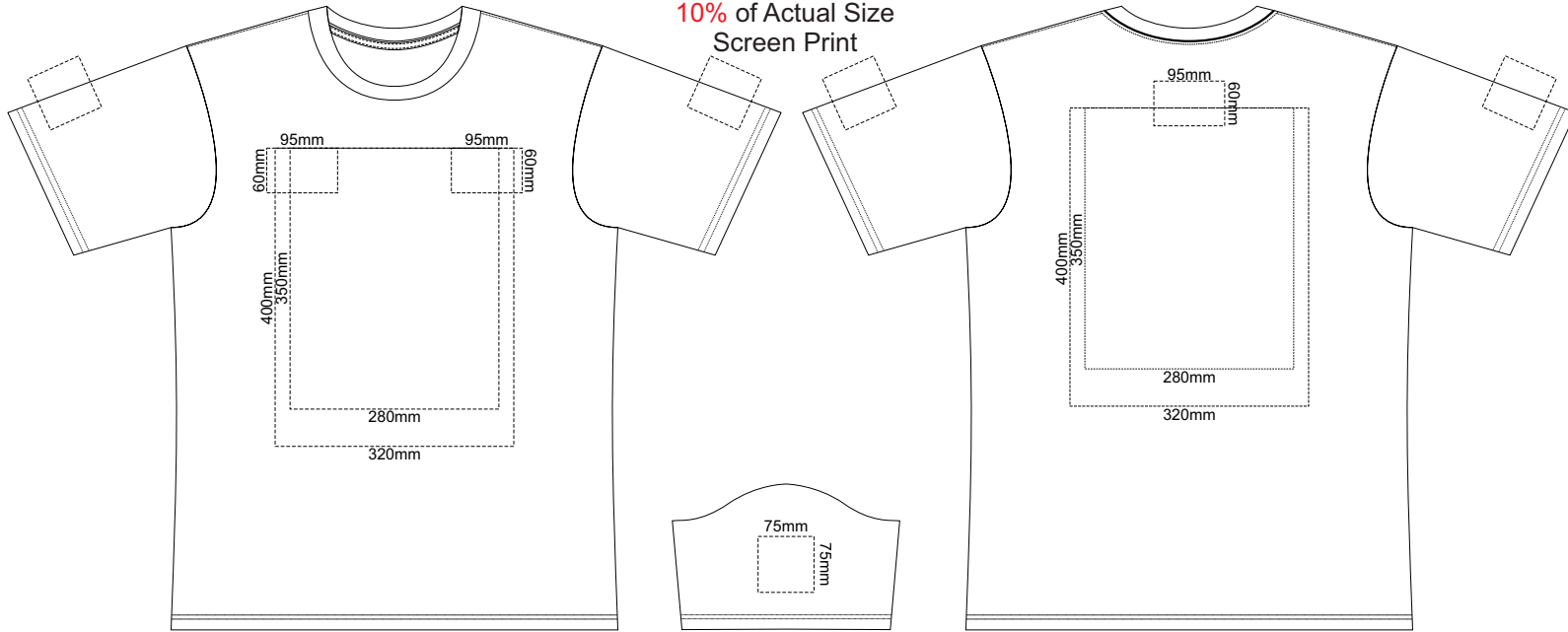
10% of Actual Size  
Embroidery



**MENS FRONT LARGE**

|              |
|--------------|
| Graphite     |
| Charcoal     |
| Grey         |
| Ash          |
| Ecru         |
| Gold         |
| Mustard      |
| Orange       |
| Rust         |
| Fuchsia      |
| Red          |
| Kelly Green  |
| Olive        |
| Bottle Green |
| Cyan         |
| Petrol Blue  |
| Royal Blue   |
| Navy         |
| Purple       |
| Carbon       |
| Black        |
| Jet Black    |

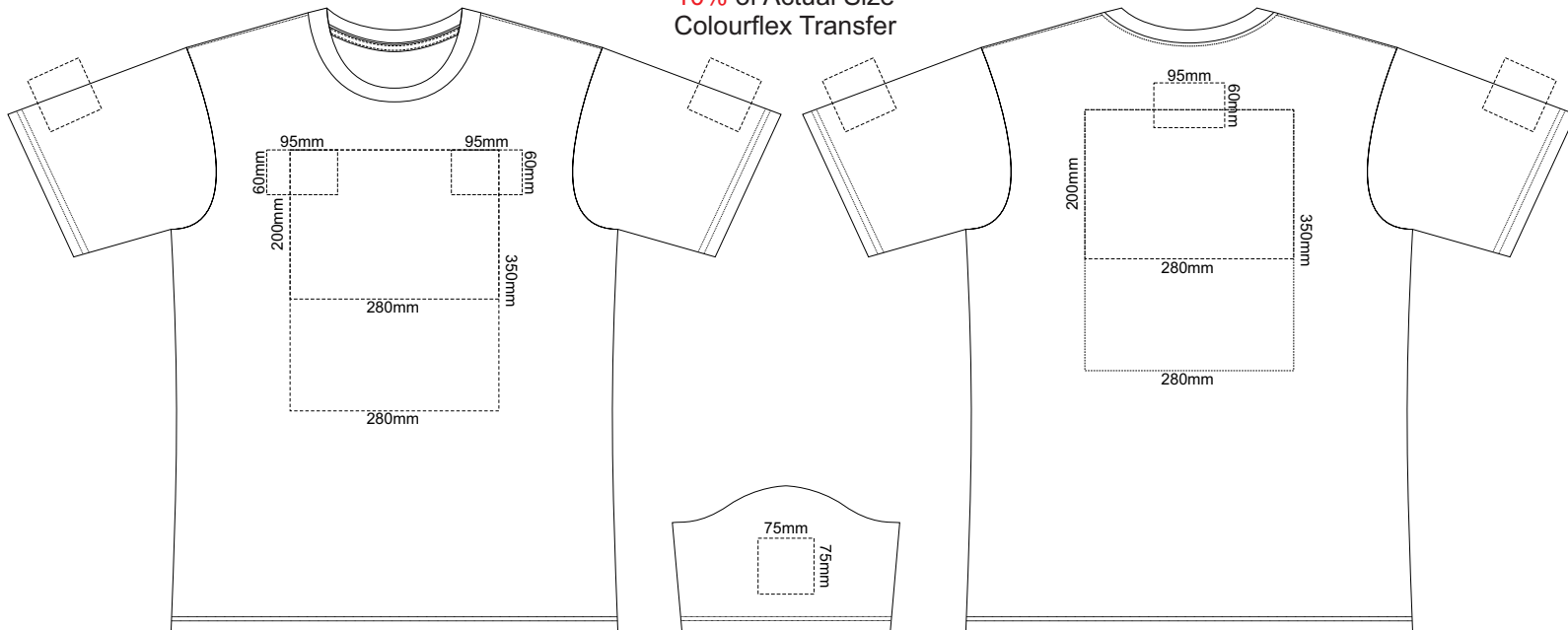
10% of Actual Size  
Screen Print



**MENS FRONT XL**

**MENS BACK XL**

10% of Actual Size  
Colourflex Transfer



Print area 280x200mm can be rotated to best suit.

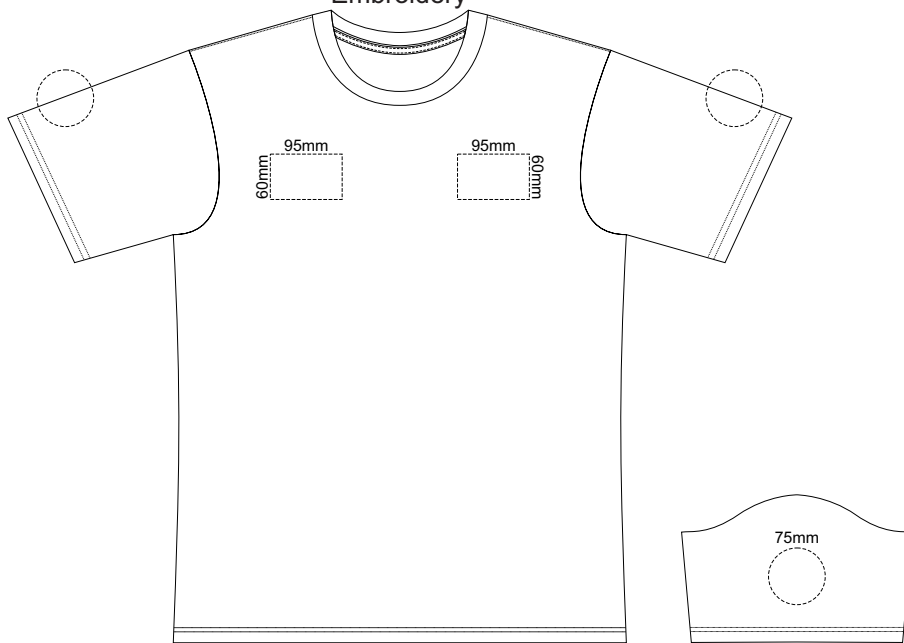
**MENS FRONT XL**

Print area 280x200mm can be rotated to best suit.

**MENS BACK XL**

|              |
|--------------|
| Graphite     |
| Charcoal     |
| Grey         |
| Ash          |
| Ecru         |
| White        |
| Gold         |
| Mustard      |
| Orange       |
| Rust         |
| Fuchsia      |
| Red          |
| Kelly Green  |
| Olive        |
| Bottle Green |
| Cyan         |
| Petrol Blue  |
| Royal Blue   |
| Navy         |
| Purple       |
| Carbon       |
| Black        |
| Jet Black    |

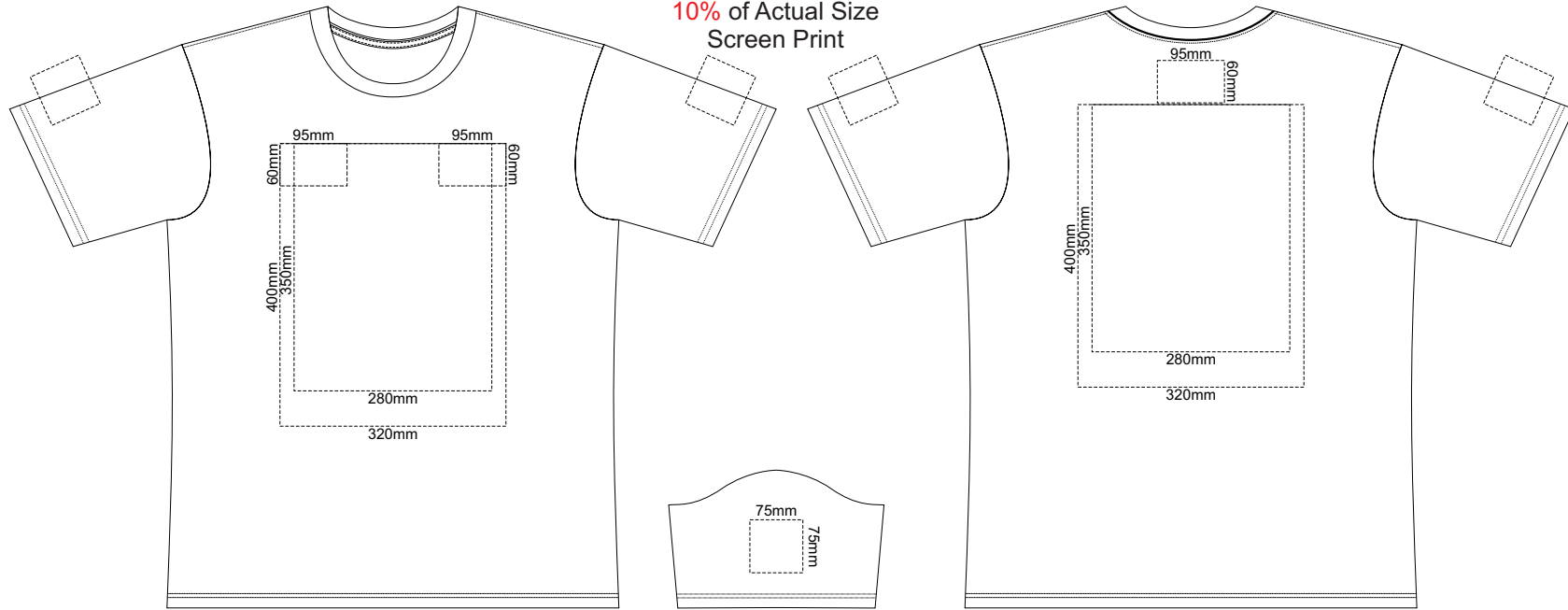
10% of Actual Size  
Embroidery



**MENS FRONT XL**

|              |
|--------------|
| Graphite     |
| Charcoal     |
| Grey         |
| Ash          |
| Ecru         |
|              |
| Gold         |
| Mustard      |
| Orange       |
| Rust         |
| Fuchsia      |
| Red          |
| Kelly Green  |
| Olive        |
| Bottle Green |
| Cyan         |
| Petrol Blue  |
| Royal Blue   |
| Navy         |
| Purple       |
| Carbon       |
| Black        |
| Jet Black    |

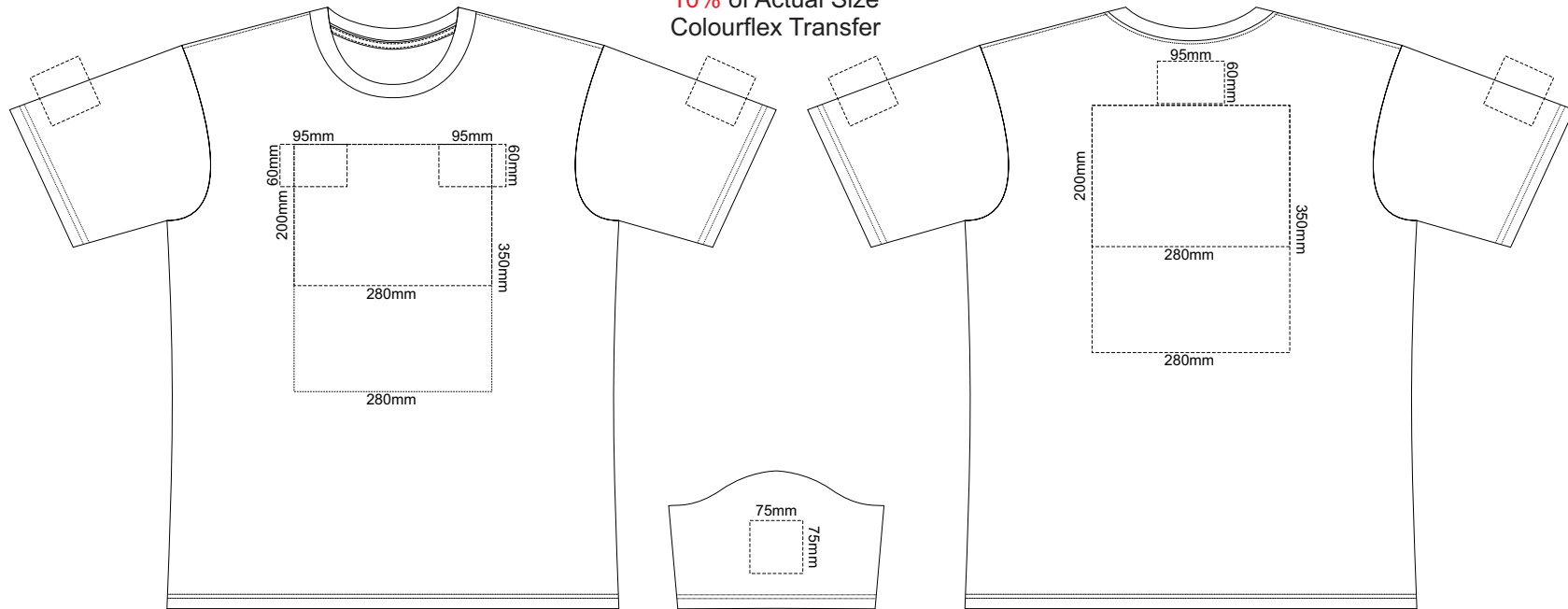
10% of Actual Size  
Screen Print



**MENS FRONT 2XL**

**MENS BACK 2XL**

10% of Actual Size  
Colourflex Transfer



Print area 280x200mm can be rotated to best suit.

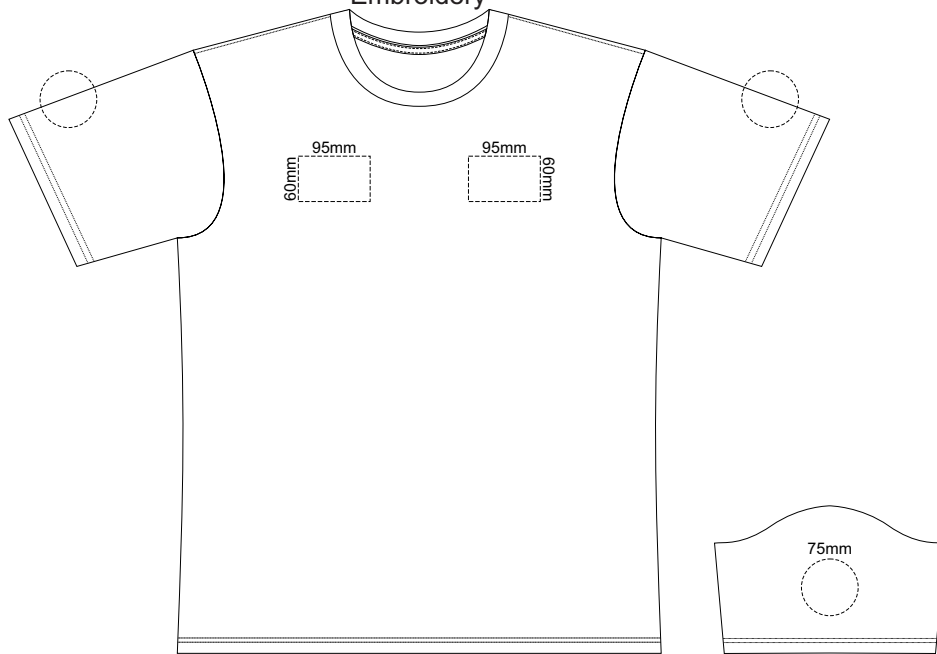
**MENS FRONT 2XL**

Print area 280x200mm can be rotated to best suit.

**MENS BACK 2XL**

|              |
|--------------|
| Graphite     |
| Charcoal     |
| Grey         |
| Ash          |
| Ecru         |
|              |
| Gold         |
| Mustard      |
| Orange       |
| Rust         |
| Fuchsia      |
| Red          |
| Kelly Green  |
| Olive        |
| Bottle Green |
| Cyan         |
| Petrol Blue  |
| Royal Blue   |
| Navy         |
| Purple       |
| Carbon       |
| Black        |
| Jet Black    |

10% of Actual Size  
Embroidery

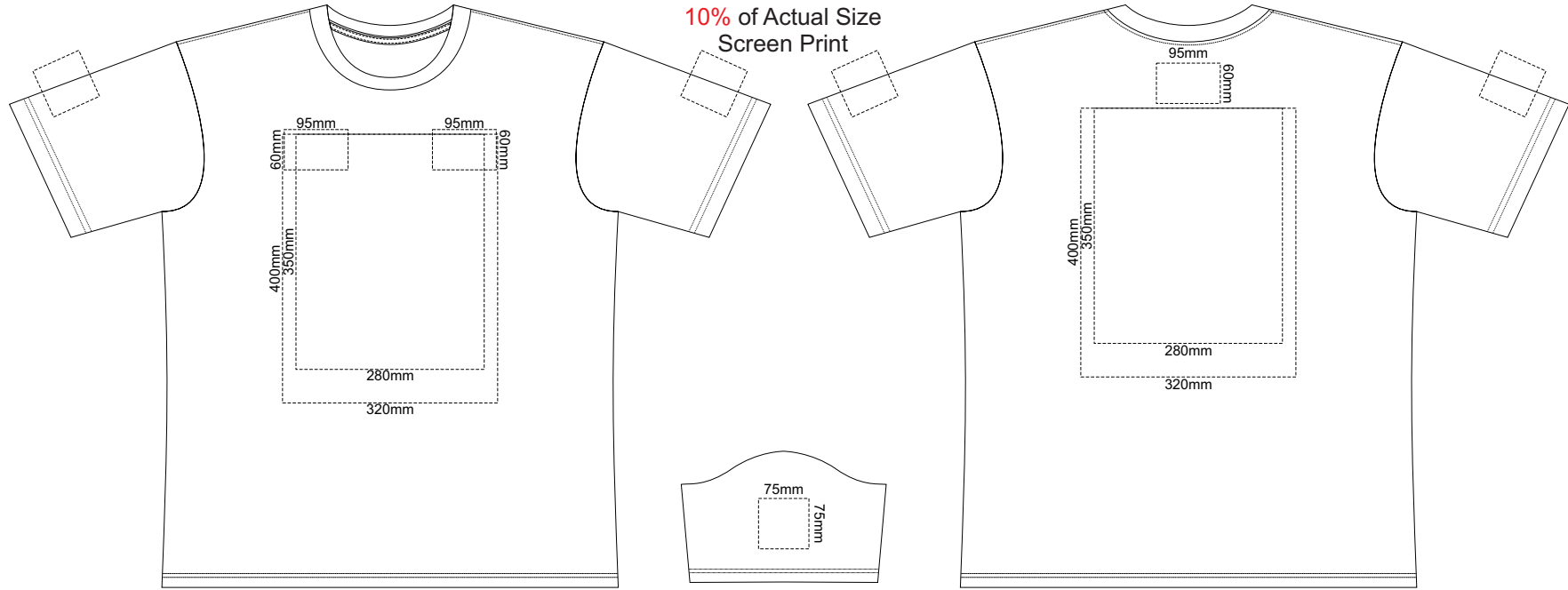


**MENS FRONT 2XL**

|              |
|--------------|
| Graphite     |
| Charcoal     |
| Grey         |
| Ash          |
| Ecru         |
|              |
| Gold         |
| Mustard      |
| Orange       |
| Rust         |
| Fuchsia      |
| Red          |
| Kelly Green  |
| Olive        |
| Bottle Green |
| Cyan         |
| Petrol Blue  |
| Royal Blue   |
| Navy         |
| Purple       |
| Carbon       |
| Black        |
| Jet Black    |



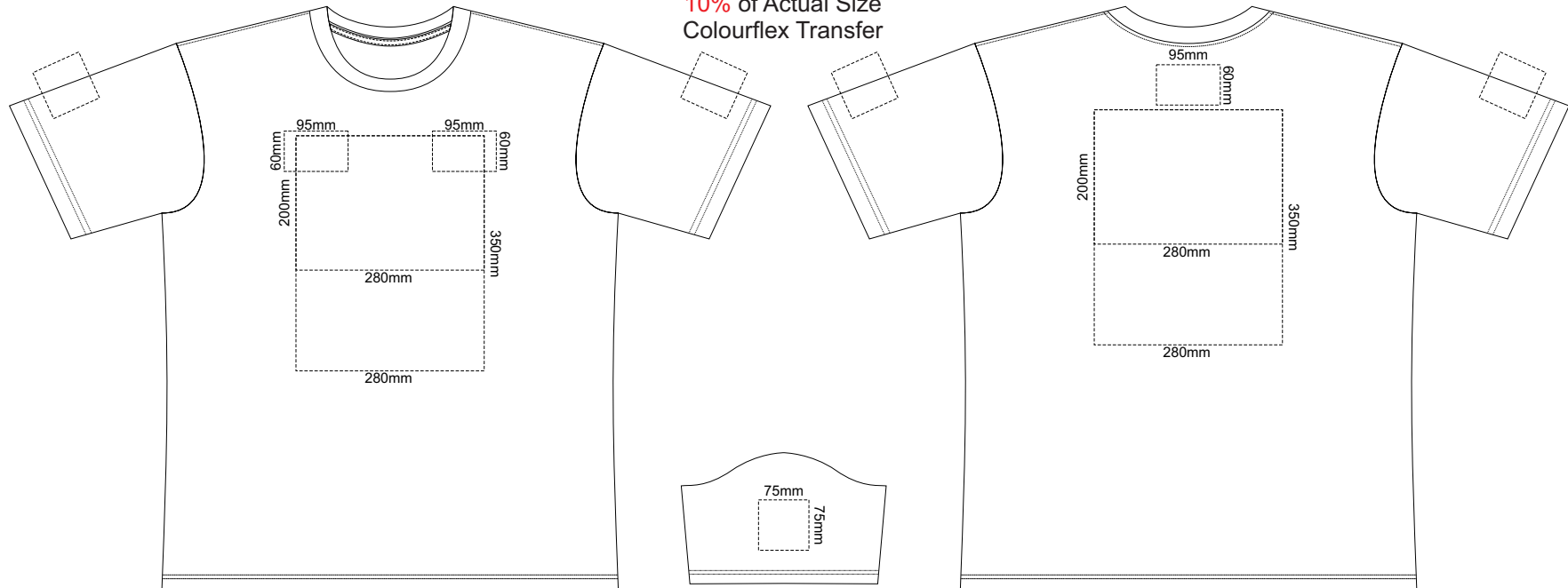
10% of Actual Size  
Screen Print



**MENS FRONT 3XL**

**MENS BACK 3XL**

10% of Actual Size  
Colourflex Transfer



**MENS FRONT 3XL**

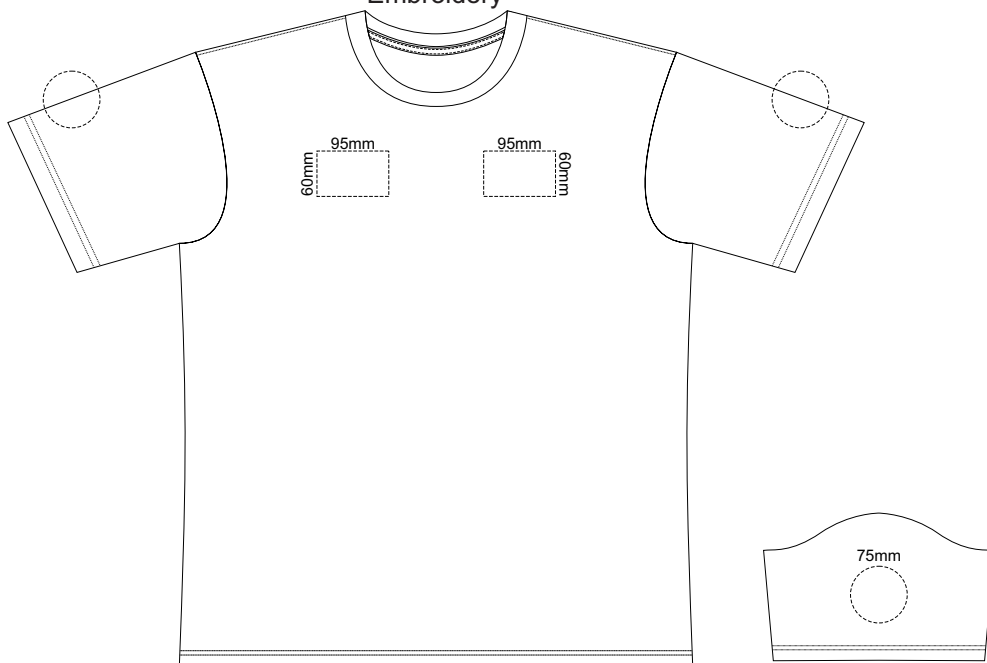
**MENS BACK 3XL**

Print area 280x200mm can be rotated to best suit.

Print area 280x200mm can be rotated to best suit.

|              |
|--------------|
| Graphite     |
| Charcoal     |
| Grey         |
| Ash          |
| Ecru         |
| White        |
| Gold         |
| Mustard      |
| Orange       |
| Rust         |
| Fuchsia      |
| Red          |
| Kelly Green  |
| Olive        |
| Bottle Green |
| Cyan         |
| Petrol Blue  |
| Royal Blue   |
| Navy         |
| Purple       |
| Carbon       |
| Black        |
| Jet Black    |

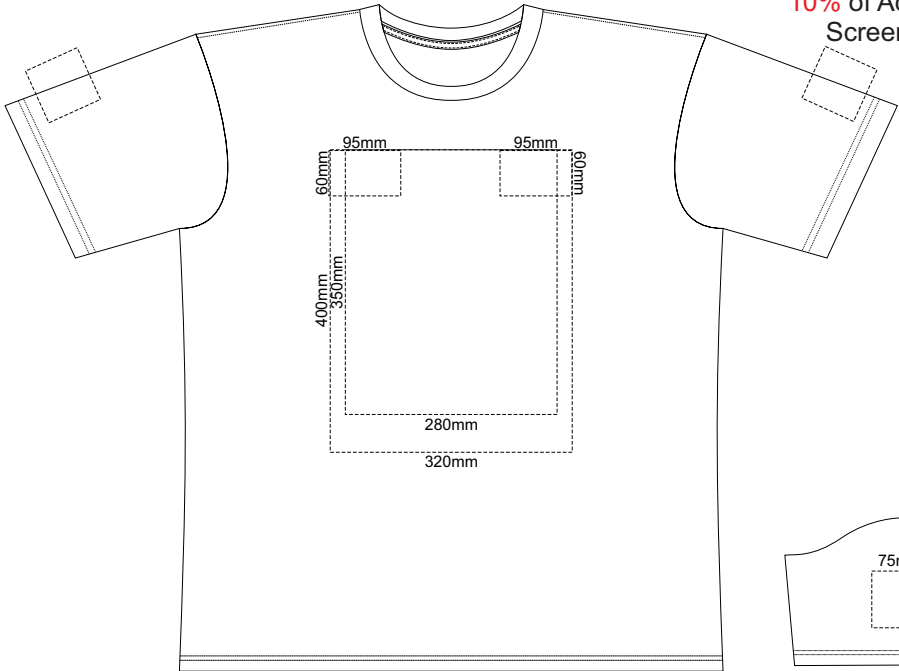
10% of Actual Size  
Embroidery



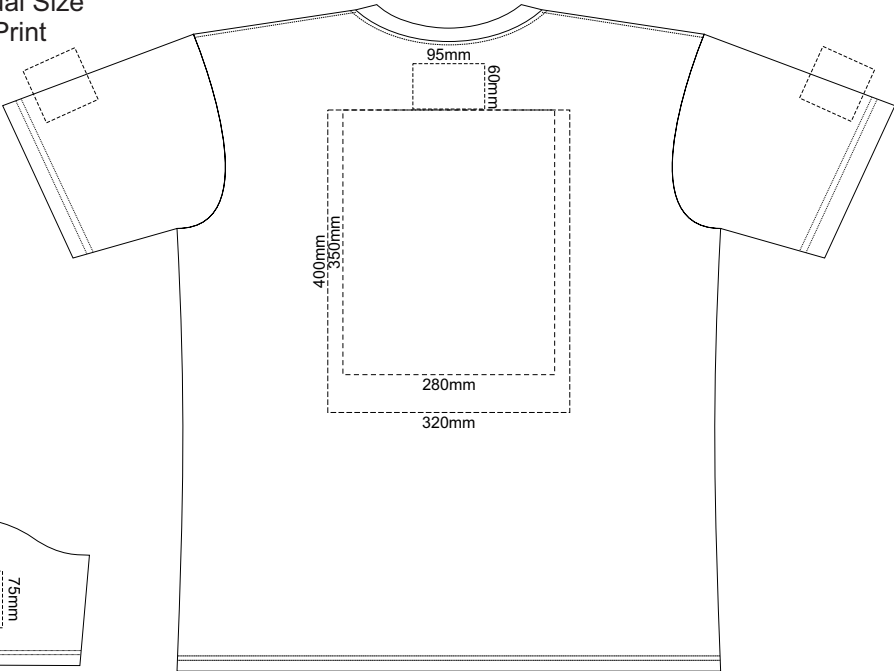
**MENS FRONT 3XL**

|              |
|--------------|
| Graphite     |
| Charcoal     |
| Grey         |
| Ash          |
| Ecru         |
|              |
| Gold         |
| Mustard      |
| Orange       |
| Rust         |
| Fuchsia      |
| Red          |
| Kelly Green  |
| Olive        |
| Bottle Green |
| Cyan         |
| Petrol Blue  |
| Royal Blue   |
| Navy         |
| Purple       |
| Carbon       |
| Black        |
| Jet Black    |

10% of Actual Size  
Screen Print

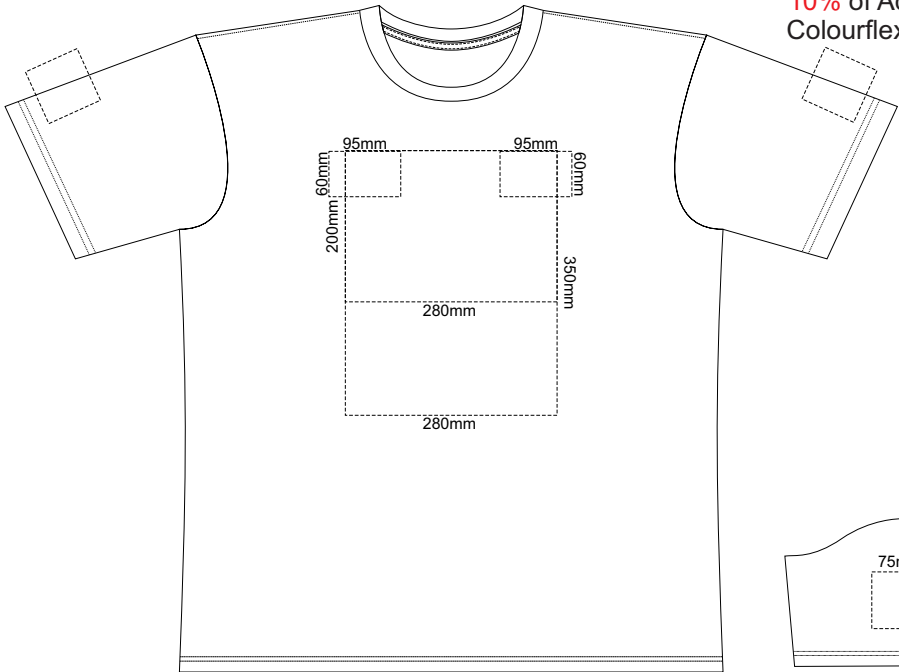


**MENS FRONT 4XL**

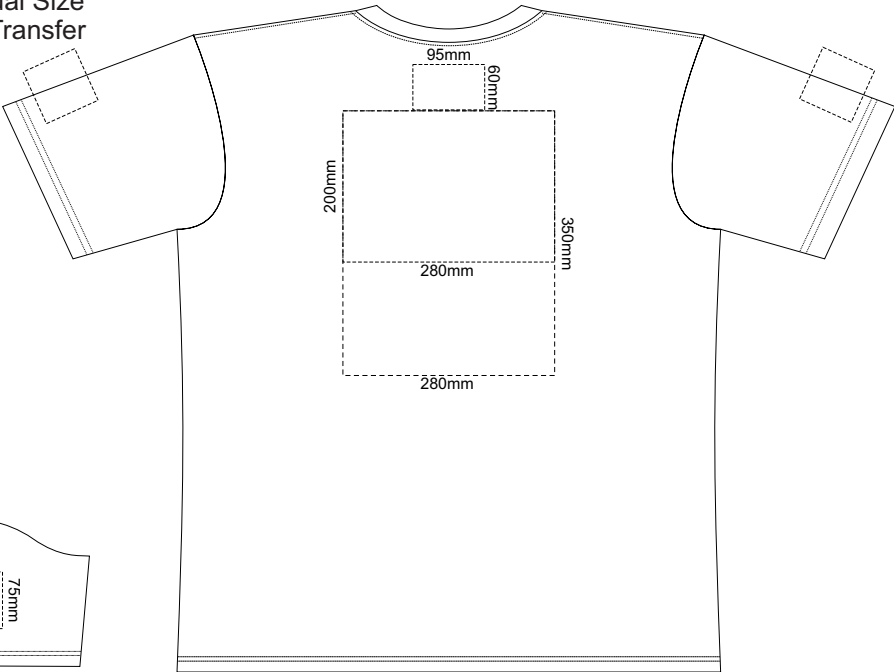


**MENS BACK 4XL**

10% of Actual Size  
Colourflex Transfer



**MENS FRONT 4XL**



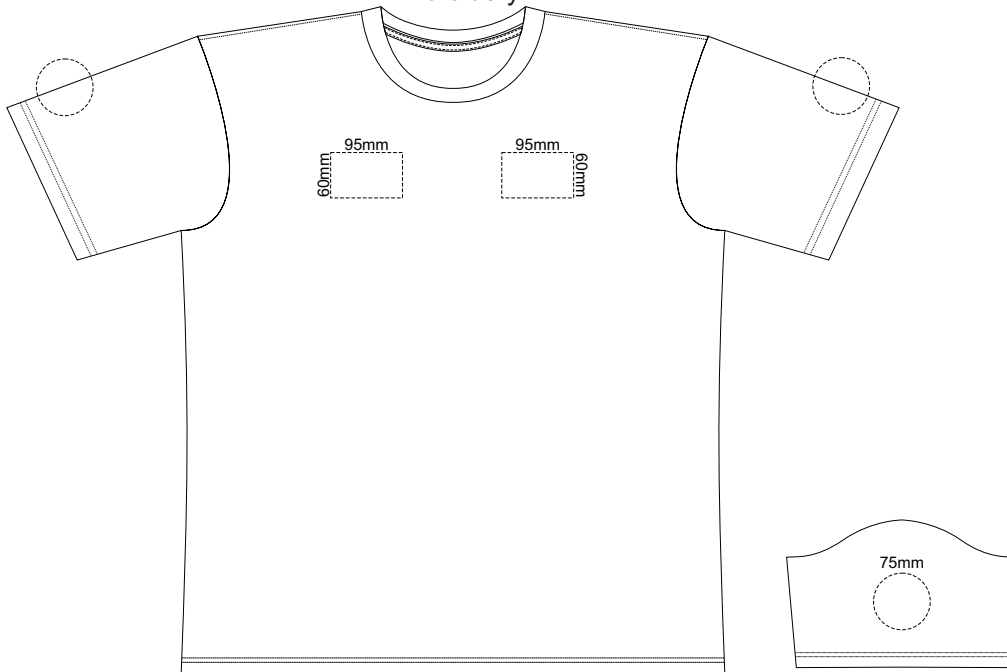
**MENS BACK 4XL**

Print area 280x200mm can be rotated to best suit.

Print area 280x200mm can be rotated to best suit.

|              |
|--------------|
| Graphite     |
| Charcoal     |
| Grey         |
| Ash          |
| Ecru         |
| White        |
| Gold         |
| Mustard      |
| Orange       |
| Rust         |
| Fuchsia      |
| Red          |
| Kelly Green  |
| Olive        |
| Bottle Green |
| Cyan         |
| Petrol Blue  |
| Royal Blue   |
| Navy         |
| Purple       |
| Carbon       |
| Black        |
| Jet Black    |

10% of Actual Size  
Embroidery



**MENS FRONT 4XL**

|              |
|--------------|
| Graphite     |
| Charcoal     |
| Grey         |
| Ash          |
| Ecru         |
|              |
| Gold         |
| Mustard      |
| Orange       |
| Rust         |
| Fuchsia      |
| Red          |
| Kelly Green  |
| Olive        |
| Bottle Green |
| Cyan         |
| Petrol Blue  |
| Royal Blue   |
| Navy         |
| Purple       |
| Carbon       |
| Black        |
| Jet Black    |